



India Meteorological Department  
(Ministry of Earth Sciences)

NATIONAL BULLETIN NO. 09

TIME OF ISSUE: 0130 HOURS IST

DATED: 01.02.2023

FROM: INDIA METEOROLOGICAL DEPARTMENT (FAX NO. 24643965/24699216/24623220)

TO: CONTROL ROOM, NDM, MINISTRY OF HOME AFFAIRS (FAX.NO. 23093750)

CONTROL ROOM NDMA (FAX.NO. 26701729)

CABINET SECRETARIAT (FAX.NO.23012284, 23018638)

PS TO HON'BLE MINISTER FOR S & T AND EARTH SCIENCES (FAX NO.23316745)

SECRETARY, MOES (FAX NO. 24629777)

H.Q. (INTEGRATED DEFENCE STAFF AND CDS) (FAX NO. 23005137/23005147)

DIRECTOR GENERAL, DOORDARSHAN (23385843)

DIRECTOR GENERAL, AIR (23421105, 23421219)

PIB MOES (FAX NO. 23389042)

UNI (FAX NO. 23355841)

D.G. NATIONAL DISASTER RESPONSE FORCE (NDRF) (FAX NO. 26105912, 2436 3260)

DIRECTOR, PUNCTUALITY, INDIAN RAILWAYS (FAX NO. 23388503)

CHIEF SECRETARY, ANDAMAN & NICOBAR ISLANDS (FAX NO. 03192- 232656)

CHIEF SECRETARY, GOVT. OF TAMIL NADU (FAX NO. 044-25672304)

CHIEF SECRETARY, GOVT. OF PUDUCHERRY (FAX NO. 0413-2337575, 2334145)

CHIEF SECRETARY, GOVT. OF KERALA (FAX NO. 0471-232716)

**Sub: Depression over Southwest Bay of Bengal**

The Depression over Southwest Bay of Bengal moved nearly west-southwestwards with a speed of 12 kmph during past 6 hours and lay centered at 2330 hours IST of yesterday, the 31<sup>st</sup> January, 2023 over the same region near latitude 8.4°N and longitude 82.9°E, about 180 km east of Trincomalee (Sri Lanka) and 440 km southeast of Karaikal (India).

It is very likely to recurve gradually west-southwestwards and cross Sri Lanka coast between latitude 7°N to 8°N during forenoon of tomorrow, the 01<sup>st</sup> February 2023.

**Forecast track and intensity are given below:**

| Date/Time(IST) | Position<br>(Lat. °N/ long. °E) | Maximum sustained surface<br>wind speed (Kmph) | Category of cyclonic<br>disturbance |
|----------------|---------------------------------|------------------------------------------------|-------------------------------------|
| 31.01.23/2330  | 8.4/82.9                        | 45-55 gusting to 65                            | Depression                          |
| 01.02.23/1130  | 7.7/81.8                        | 45-55 gusting to 65                            | Depression                          |
| 01.02.23/2330  | 6.9/80.8                        | 40-50 gusting to 60                            | Depression                          |

**Warnings:**

**(i) Rainfall (warning graphics enclosed)**

- ❖ Light/moderate rainfall is very likely at many places over coastal Tamil Nadu & Puducherry on 1<sup>st</sup> and 2<sup>nd</sup> February. Isolated heavy rainfall is very likely over south Tamil Nadu on 1<sup>st</sup> and 2<sup>nd</sup> February.

**(ii) Wind warning:**

❖ **Southwest Bay of Bengal:**

- Squally wind with speed reaching 45-55 kmph gusting to 65 kmph on 1<sup>st</sup> February.
- Squally wind with speed reaching 40-50 kmph gusting to 60 kmph on 2<sup>nd</sup> February.

❖ **Along & off Sri Lanka coast:**

- Squally wind with speed reaching 45-55 kmph gusting to 65 kmph on 1<sup>st</sup> February.
- Squally wind with speed reaching 40-50 kmph gusting to 60 kmph on 2<sup>nd</sup> February.

❖ **Gulf of Mannar and Comorin area and along & off south Tamil Nadu & Karaikal coasts:**

- Squally wind speed reaching 40-50 kmph gusting to 60 kmph during 1<sup>st</sup> to 2<sup>nd</sup> February.

❖ **Along & off north Tamil Nadu & Puducherry coasts:**

- Strong wind speed reaching 30-40 kmph gusting to 50 kmph during 1<sup>st</sup> to 2<sup>nd</sup> February.

**(iii) Sea condition**

❖ **Sea condition is likely to be rough to very rough**

- Southwest Bay of Bengal and along & off Sri Lanka coast during 1<sup>st</sup> to 2<sup>nd</sup> February.
- Gulf of Mannar and adjoining Comorin area and along & off south Tamil Nadu coast during 1<sup>st</sup> to 2<sup>nd</sup> February

❖ **Sea condition is likely to be moderate to rough**

- Along and off north Tamil Nadu & Puducherry coasts during 1<sup>st</sup> to 2<sup>nd</sup> February.

**(iv) Fishermen Warning (warning graphics enclosed)**

Fishermen are advised not to venture into:

- ❖ Southwest Bay of Bengal, Gulf of Mannar, Comorin Area and along & off Sri Lanka and south Tamil Nadu & Karaikal coasts till 2<sup>nd</sup> February.

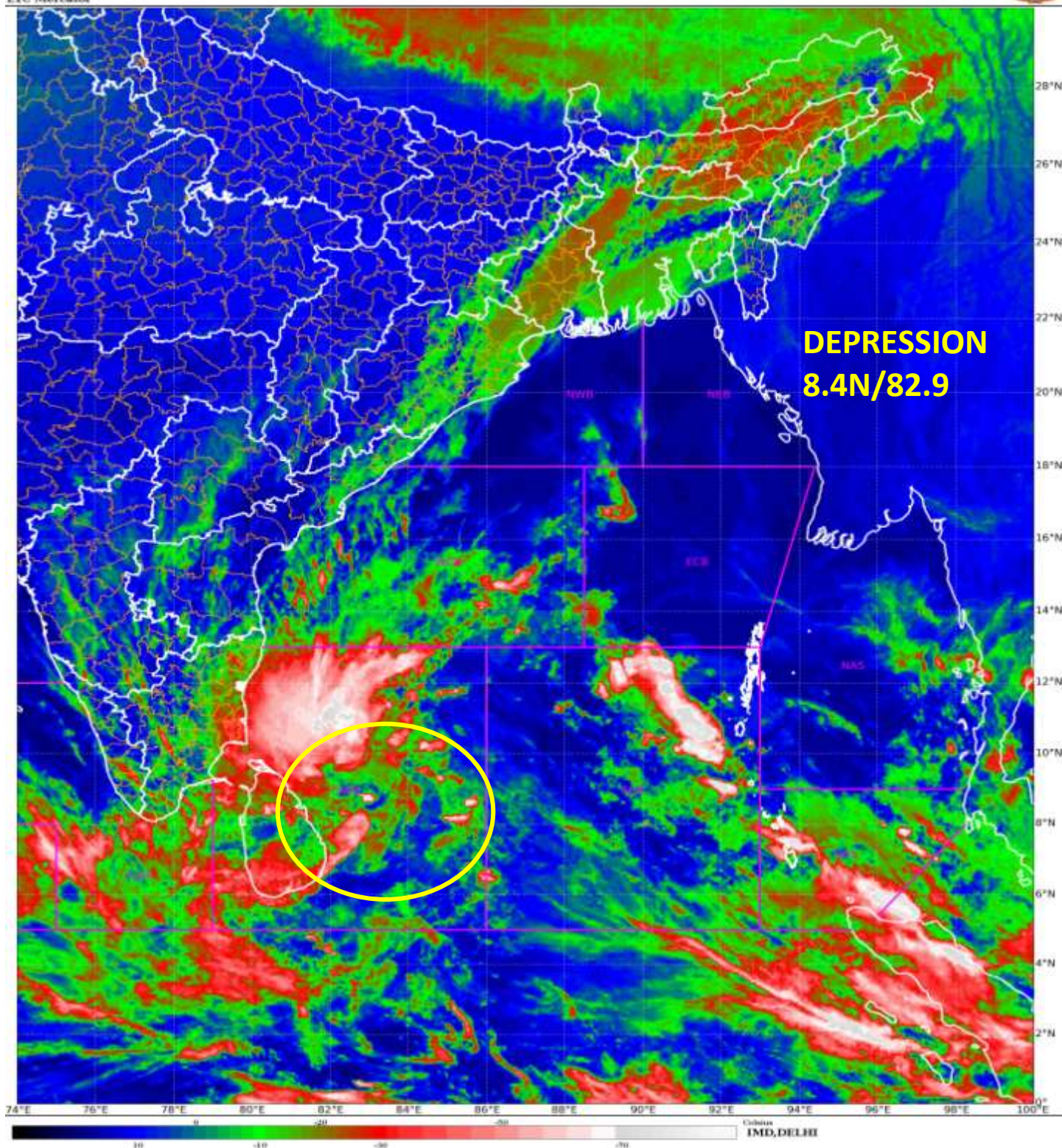
Fishermen out at sea off Tamil Nadu and Kerala coasts are advised to return to the coasts by today, the 1<sup>st</sup> February.

**The system is under continuous surveillance and the next message will be issued at 0830 hours IST of today, the 1<sup>st</sup> February, 2023.**

**(Arulalan T)**  
**Scientist C, Cyclone Warning, New Delhi**

*Copy to: ACWC Kolkata/ ACWC Chennai/ CWC Bhubaneswar/CWC Visakhapatnam/MO Port Blair*

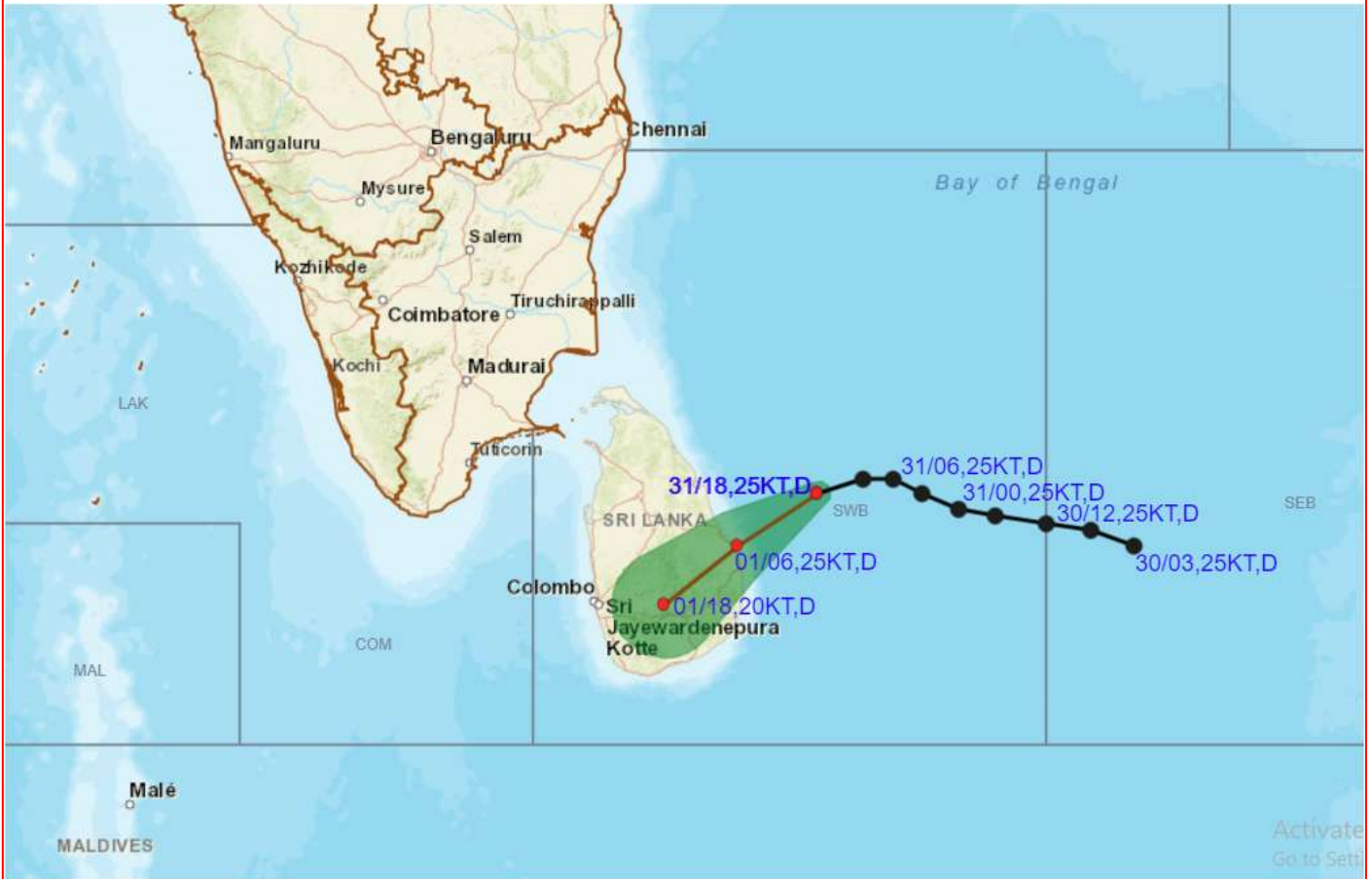
**LEGEND: Heavy Rainfall:** 64.5 to 115.5mm, **Very Heavy Rainfall:** 115.6 to 204.4mm **Most Places:** more than 76% of total stations, **Isolated Places:** Less than 25% of total













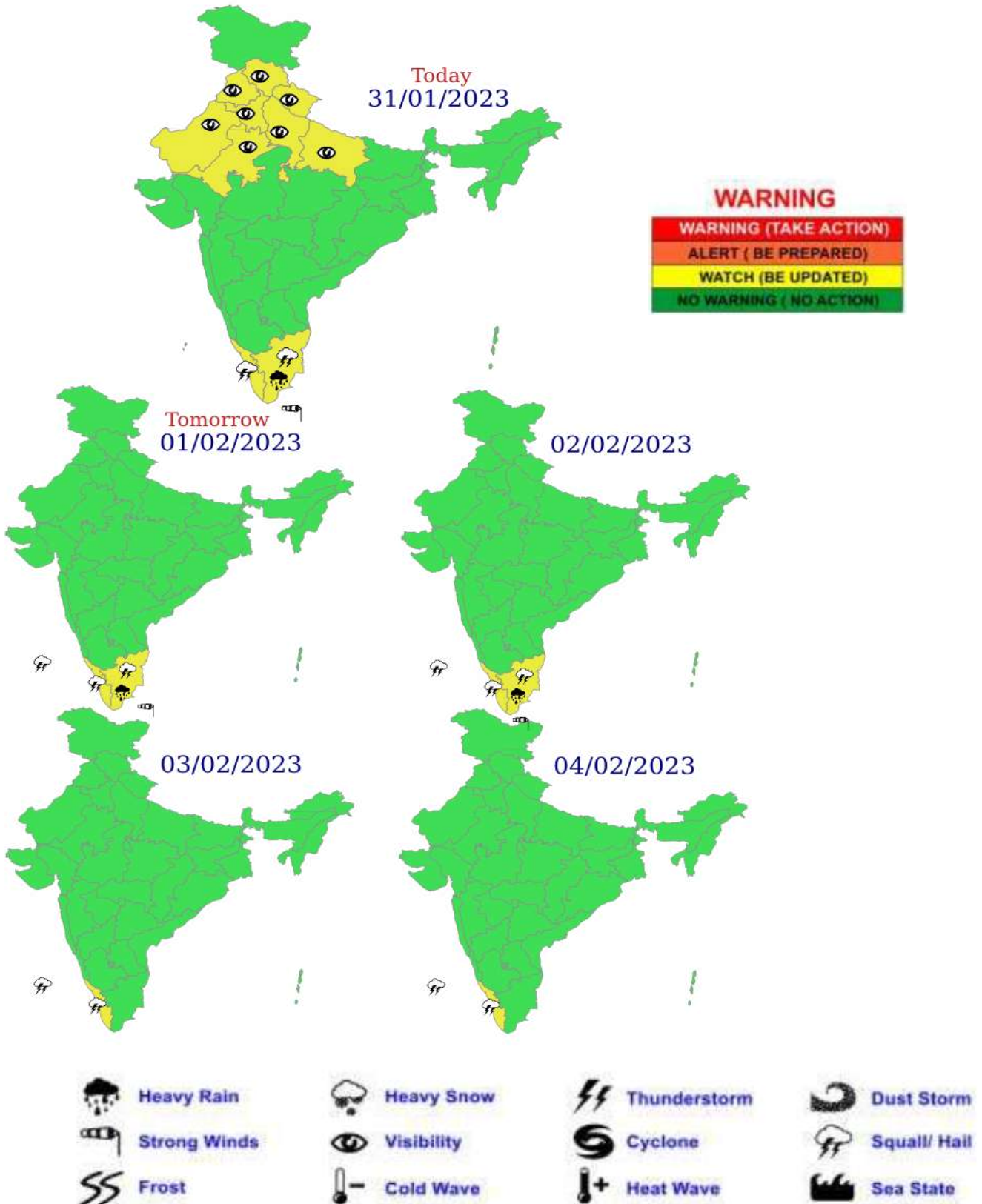
**OBSERVED AND FORECAST TRACK OF DEPRESSION OVER SOUTHWEST BAY OF BENGAL BASED ON 1800 UTC OF 31<sup>ST</sup> JANUARY, 2023.**



DATE/TIME IN UTC  
 IST=UTC + 0530  
 L: LOW PRESSURE AREA  
 WML: WELL MARKED LOW PRESSURE AREA  
 D: DEPRESSION (17-27 KT)  
 DD: DEEP DEPRESSION (28-33 KT)  
 CS: CYCLONIC STORM (34-47 KT)  
 SCS: SEVERE CYCLONIC STORM (48-63KT)  
 VSCS: VERY SEVERE CYCLONIC STORM (64-89 KT)  
 ESCS: EXTREMELY SEVERE CYCLONIC STORM (90-119 KT)  
 SuCS: SUPER CYCLONIC STORM (≥ 120 KT)

-  LESS THAN 34 KT
-  34-47 KT
-  ≥ 48 KT
-  OBSERVED TRACK
-  FORECAST TRACK
-  CONE OF UNCERTAINTY

# Multi hazard Warning Graphics



## Fishermen warning graphics



Squally WX with wind speed 40-45 kmph gusting to 55 kmph

Squally wind speed 45-55 kmph gusting to 65 kmph

**Fishermen are advised not to venture into the marked areas.**